

Ryan Olsen
 Vice President, Business Information and Statistics
 Tel: 1-703-358-2984
 Email: rolsen@aluminum.org

Henry F. Sattlethight
 Manager, Statistical Programs
 Tel: 1-703-358-2985
 E-mail: hsattlet@aluminum.org

U.S. PRIMARY ALUMINUM PRODUCTION

Report for January 2018

Issued: February 12, 2018

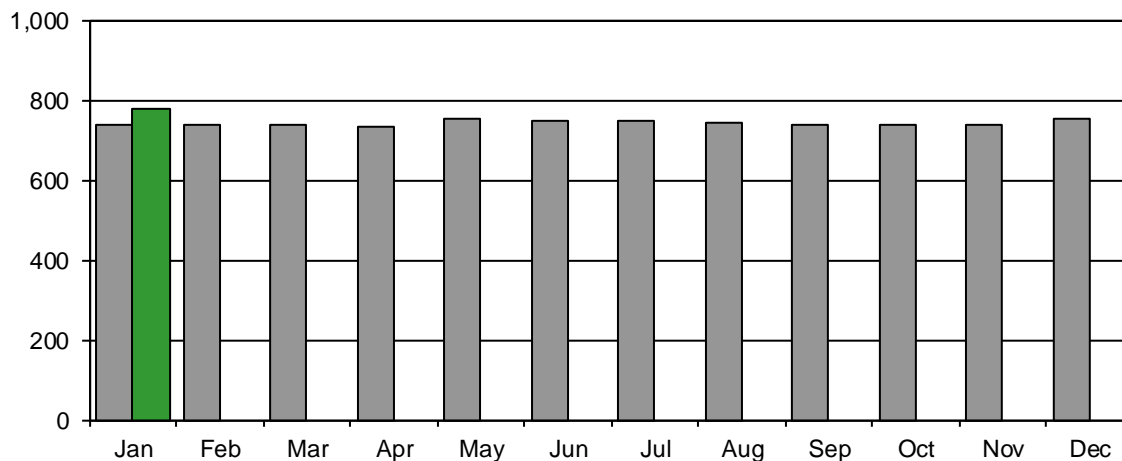
Based on Aluminum Association surveys, the annual rate of U.S. primary aluminum production totaled 777,556 metric tons (tonnes) during January 2018, an increase of 5.7 percent over the January 2017 annual rate of 735,828 tonnes. Compared to the previous month, the annual rate of production rose 3.6 percent over the December 2017 annual rate of 750,758 tonnes. Production for 2017 totaled 740,884 metric tons (tonnes), off 9.5 percent from the 2016 total of 818,430 tonnes. Actual production for the month of January 2018 totaled 66,093 tonnes.

Participating companies include Alcoa Inc. and Century Aluminum Co. These companies account for 100 percent of U.S. primary aluminum production during January 2018.

Primary Aluminum Production (Thousands of Metric Tons)	January		% Chng	Dec. 2017	% Chng	Total Year		% Chng
	2018	2017	Jan/Jan		Jan/Dec	2017	2016	17/16
Annual Rate	777.6	735.8	5.7	750.8	3.6	740.9	818.4	-9.5

Annual Rate of U.S. Primary Aluminum Production

■ 2017 ■ 2018



Thousands of Metric Tons

The Aluminum Association, Inc.

This report is available on The Aluminum Association web site: www.aluminum.org.

This report is based on information reported to the Association by participants, which is aggregated by the Association. While the Association believes that its statistical procedures and methods are reliable, it does not warrant the accuracy or completeness of the data. All data contained herein are subject to revision. © The Aluminum Association, Inc.

U.S. PRIMARY ALUMINUM PRODUCTION
(Metric Tons)

	<u>Production</u>		<u>Average Daily Production</u>		<u>Annual Rate of Production</u>	
	<u>2018</u>	<u>2017</u>	<u>2018</u>	<u>2017</u>	<u>2018</u>	<u>2017</u>
January	66,039	62,495	2,130	2,016	777,556	735,828
February		56,457		2,016		735,957
March		62,811		2,026		739,549
QTR Total		181,763		2,020		737,150
April		60,022		2,001		730,268
May		63,825		2,059		751,488
June		61,323		2,044		746,097
QTR Total		185,170		2,035		742,715
July		63,375		2,044		746,190
August		62,972		2,031		741,445
September		60,447		2,015		735,439
QTR Total		186,794		2,030		741,085
October		62,582		2,019		736,853
November		60,812		2,027		739,879
December		63,763		2,057		750,758
QTR Total		187,157		2,034		742,525
Current YTD	66,039	62,495	2,130	2,016	777,556	735,828
Total Year		740,884		2,030		740,884

This report is based on information reported to the Association by participants, which is aggregated by the Association. While the Association believes that its statistical procedures and methods are reliable, it does not warrant the accuracy or completeness of the data. All data contained herein are subject to revision.